

SERIES 616KD-LR | DIFFERENTIAL PRESSURE TRANSMITTER - LOW RANGES

FEATURES/BENEFITS

- Wide selection of low ranges and accuracy cover numerous applications minimizing components and standardizing on design
- Simple calibration push-buttons to set zero and span, saving time installing and maintaining over the service life
- Cost effective and compact device suitable for OEM applications where space, simplicity, and value are key

APPLICATIONS

- Air handlers
- Duct pressure
- Variable air volume
- Filter monitoring

DESCRIPTION

The **SERIES 616KD-LR** Differential Pressure Transmitter is designed for simplicity, making it the ideal choice for installers and maintenance professionals. These low range instruments not only alleviate cumbersome turn pots typically found in most transmitters, but eliminate entirely the need to span the instruments during calibration. With single digital push button, both ZERO AND SPAN are calibrated properly, nothing else is required. No additional reference pressure sources or separate calibration devices are necessary.



NPT Connection Block



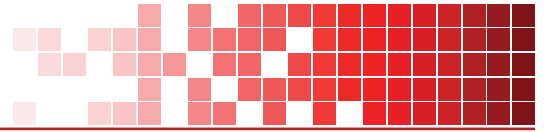
Integral DIN Rail Mounting Kit

Digital push button sets both zero and span

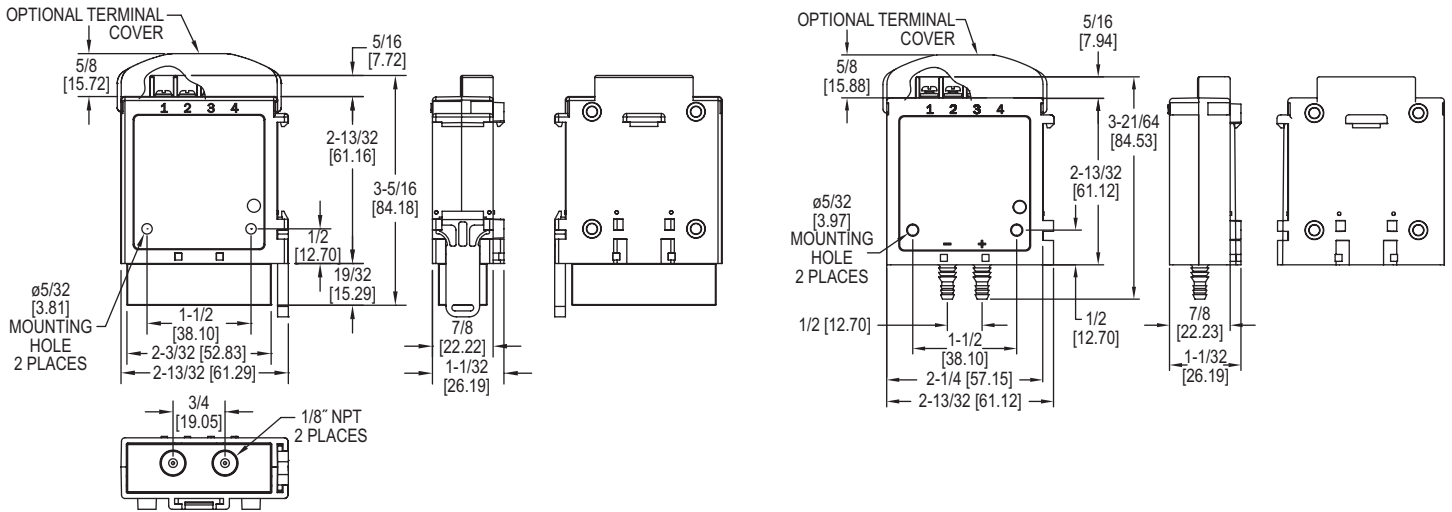
SPECIFICATIONS

| | |
|----------------------------------|---|
| Service | Air and non-combustible, compatible gases. |
| Wetted Materials | Consult factory. |
| Accuracy | ±0.25% FS for ±0.4" (100 Pa) and ±0.5" (125 Pa), ±0.5% FS for ±0.25" (60 Pa), and ±1% FS for ±0.1" (25 Pa). |
| Stability | ±1% / year FSO. |
| Temperature Limits | 0 to 140°F (-17.8 to 60°C). |
| Pressure Limits | 1 psi max., operation; 10 psi burst. |
| Power Requirements | 10 to 35 VDC (2 wire), 17 to 36 VDC or isolated 21.6 to 33 VAC (3 wire). |
| Output Signal | 4 to 20 mA (2-wire), 0 to 5 VDC, 0 to 10 VDC (3-wire). |
| Response Time | 2.5 Hz sample rate. |
| Zero and Span Adjustments | Push button. |
| Loop Resistance | Current Output: 0 to 1250Ω max; Voltage Output: Min. load resistance 1kΩ. |
| Current Consumption | 40 mA max. |
| Electrical Connections | 3-wire removable European style terminal block for 16 to 26 AWG. |
| Process Connections | Barbed, dual size to fit 1/8" & 3/16" (3 mm & 5 mm) ID rubber or vinyl tubing, or 1/4" NPT. |
| Enclosure Rating | NEMA1 (IP20). |
| Mounting Orientation | Vertical with pressure connections pointing down. |
| Weight | 1.8 oz (51 g). |
| Agency Approvals | CE. |





DIMENSIONS



HOW TO ORDER

Use the **bold** characters from the chart below to construct a product code.

| | | | | | | | | |
|-----------------|--|-----------|-----------|-----------|-----------|------------|--|--|
| | 616KD-LR | -A | 34 | -B | D1 | -AT | | |
| SERIES | 616KD-LR - Differential pressure transmitter | | | | | | OPTIONS | |
| ACCURACY | <ul style="list-style-type: none"> -A - 0.25% FS accuracy -B - 1.0% FS accuracy -D - 0.5% FS accuracy | | | | | | <ul style="list-style-type: none"> -AT - Aluminum tag -COC - Certificate of Conformance -FC - Factory Calibration Certificate -NIST - NIST Traceable Calibration Certificate -TC - Terminal cover | |
| | | | | | | | OUTPUT | |
| | | | | | | | <ul style="list-style-type: none"> -D1 - 4 to 20 mA and 0 to 10 V -D2 - 4 to 20 mA and 0 to 5 V -D3 - 4 to 20 mA and 2 to 10 V -D4 - 4 to 20 mA and 1 to 5 V | |
| | | | | | | | PROCESS CONNECTION | |
| | | | | | | | <ul style="list-style-type: none"> -B - Plastic Barb -N - 1/8" female NPT with front push button | |
| | | | | | | | RANGES (LOW RANGES) | |
| | | | | | | | <ul style="list-style-type: none"> -31 - 0 to 0.1 in w.c.* -32 - 0 to 0.25 in w.c.* -34 - 0 to 0.4 in w.c. -35 - 0 to 0.5 in w.c. -41 - 0 to ±0.1 in w.c. -42 - 0 to ±0.25 in w.c. -44 - 0 to ±0.4 in w.c. -45 - 0 to ±0.5 in w.c. -61 - 25 Pa* | <ul style="list-style-type: none"> -62 - 60 Pa* -64 - 100 Pa -65 - 125 Pa -71 - 0 to ±25 Pa -72 - 0 to ±60 Pa -74 - 0 to ±100 Pa -75 - 0 to ±125 Pa |
| | | | | | | | *B & C Accuracy only. | |

Important Notice: Dwyer Instruments, Inc. reserves the right to make changes to or discontinue any product or service identified in this publication without notice. Dwyer advises its customers to obtain the latest version of the relevant information to verify, before placing any orders, that the information being relied upon is current.

